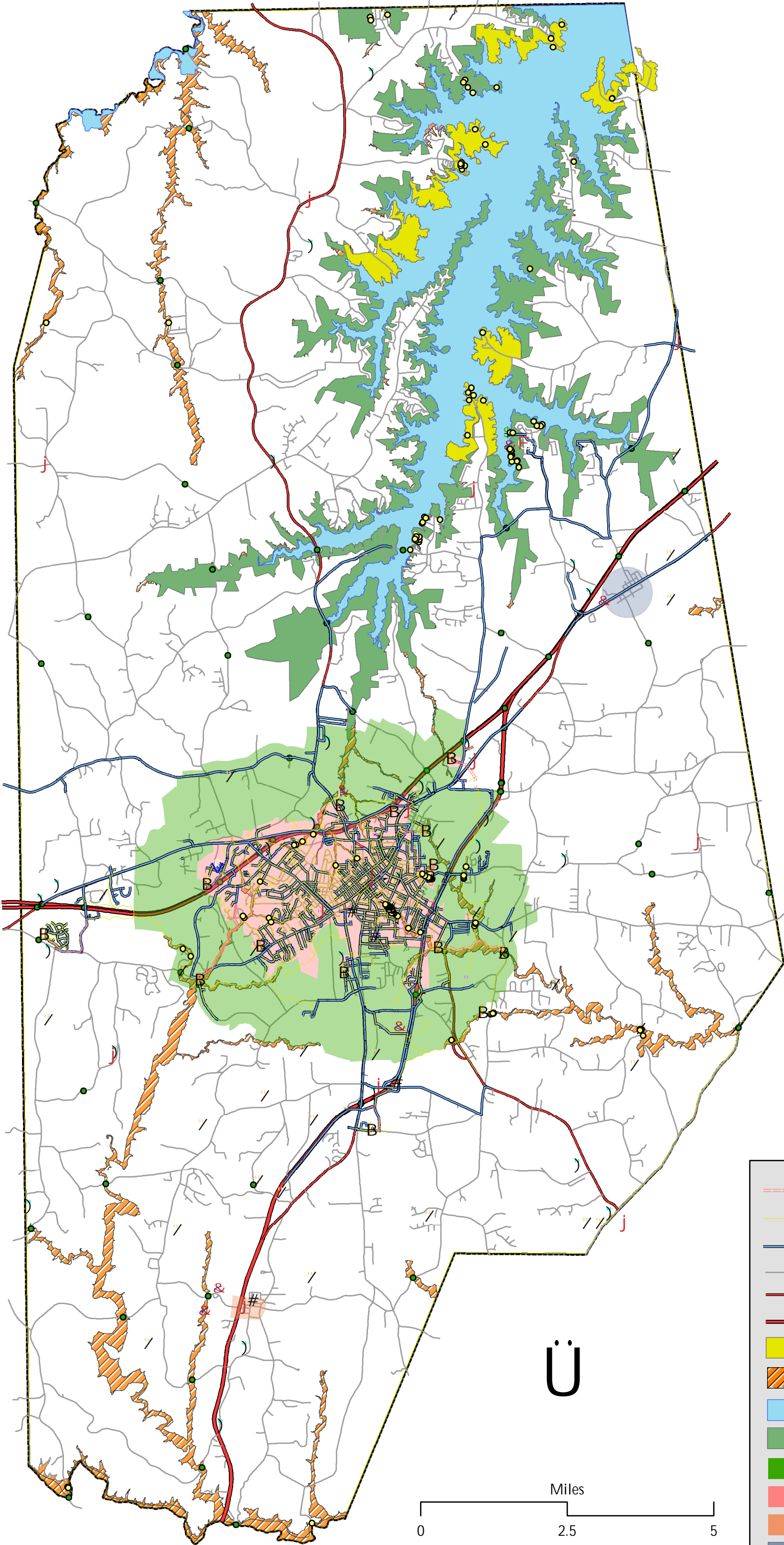


Vance County Hazard Mitigation Base Map



- Legend**
- Structures in Floodplain
 - Emergency Shelters
 - Hospital
 - Fire Depts.
 - Water Intakes
 - Water Tanks
 - Water Treatment Sites
 - Waste Water Treatment
 - NPDES Sites
 - Bridges
 - Dams
 - Sewer Pumps
 - Cell Towers
 - Force Mains
 - Sewer Mains
 - Water Lines
 - Roads (Minor)
 - Roads (Major)
 - Interstate 85
 - State Parks
 - Floodplains
 - Kerr Lake
 - Corps. of Engineers Property
 - Extra Territorial Jurisdiction
 - City of Henderson
 - Town of Kittrell
 - Town of Middleburg

Miles
0 2.5 5

Map created by Vance County Planning and Development; 2009