

# NOTICE OF BUFFER ZONES

2024 Primary Election

**Notice about Buffer Zone and Area for Election-Related Activity:** No later than 30 days before each election, the county board of elections shall make available to the public the following information concerning each voting place:

1. The door from which the buffer zone is measured.
2. The distance the buffer zone extends from that door.
3. Any available information concerning where political activity, including sign placement, is permitted beyond the buffer zone.

**Curbside Voting:** For the purposes of the buffer zone for electioneering activity, the vehicle is considered the voting enclosure. The buffer zone shall be at least six feet from the vehicle, and a greater distance if possible. Electioneers shall not enter the buffer zone.

## Contents

<b>§ 163-166.4 Limitation on activity in the voting place and in a buffer zone around it .....</b>	<b>3</b>
Early voting Site – Aycock Recreational Complex - 307 Carey Chapel Rd.....	5
Early Voting Site – Eaton Johnson Gym – 500 N. Beckford Dr.....	6
Precinct CC – VGCC - 200 Community College .....	7
Precinct EH1 – Advance Academy - 219 Charles St.....	8
Precinct Hilltop – St. James Baptist Church – 3005 Hwy 158 Business.....	9
Precinct Kittrell – Kittrell Fire Station – 54 W Main St.....	10
Precinct Middleburg – EO Young Elementary – US 1 N Middleburg.....	11
Precinct New Hope – New Hope Elementary – 10199 NC Hwy 39N.....	12
Precinct NH1 – County Office Building – 305 Young St. & Walnut St.....	13
Precinct NV – Vance City Middle – 293 Warrenton Rd.....	14
Precinct SCRK – Aycock Recreational Complex – 307 Carey Chapel Rd.....	15
Precinct SH1 – Perry Memorial Library – 205 Breckenridge St.....	16
Precinct SH2 – LB Yancey Elementary – 311 Hawkins Dr.....	17
Precinct WH – Central Fire Station – 211 Dabney Dr.....	18

## § 163-166.4 Limitation on activity in the voting place and in a buffer zone around it.

- a) Buffer Zone. - No person or group of persons shall hinder access, harass others, distribute campaign literature, place political advertising, solicit votes, or otherwise engage in election-related activity in the voting place or in a buffer zone which shall be prescribed by the county board of elections around the voting place. In determining the dimensions of that buffer zone for each voting place, the county board of elections shall, where practical, set the limit at 50 feet from the door of entrance to the voting place, measured when that door is closed, but in no event shall it set the limit at more than 50 feet or at less than 25 feet.
- b) Area for Election-Related Activity. - Except as provided in subsection (c) of this section, the county board of elections shall also provide an area adjacent to the buffer zone for each voting place in which persons or groups of persons may distribute campaign literature, place political advertising, solicit votes, or otherwise engage in election-related activity.
- c) Special Agreements About Election-Related Activity. - The Executive Director of the State Board of Elections may grant special permission for a county board of elections to enter into an agreement with the owners or managers of a nonpublic building to use the building as a voting place on the condition that election-related activity as described in subsection (b) of this section not be permitted on their property adjacent to the buffer zone, if the Executive Director finds all of the following:
  - 1) That no other suitable voting place can be secured for the precinct.
  - 2) That the county board will require the chief judge of the precinct to monitor the grounds around the voting place to ensure that the restriction on election-related activity shall apply to all candidates and parties equally.
  - 3) That the pattern of voting places subject to agreements under this subsection does not disproportionately favor any party, racial or ethnic group, or candidate.
  - 4) That the county board has attempted to secure as a term of the agreement at least 36 hours prior to the opening of the voting place and at least 36 hours after the close of the voting place, as provided in G.S. 163166.01, for candidates to place and retrieve political advertising. The agreement may also provide that any political advertising placed outside the times specified in this subsection may be removed by the property owner.

An agreement under this subsection shall be valid for as long as the nonpublic building is used as a voting place.

- d) Notice About Buffer Zone and Area for Election-Related Activity. - No later than 30 days before each election, the county board of elections shall make available to the public the following information concerning each voting place:
  - 1. The door from which the buffer zone is measured.
  - 2. The distance the buffer zone extends from that door.
  - 3. Any available information concerning where political activity, including sign placement, is permitted beyond the buffer zone.
- e) Buffer Zone and Area for Election-Related Activity at One-Stop Sites. - Except as modified in this subsection, the provisions of this section shall apply to one-stop voting sites in G.S. 163-227.2, 163-227.5, and 163-227.6.

- 1) Subsection (c) of this section shall not apply.
  - 2) The notice in subsection (d) of this section shall be provided no later than 10 days before the opening of Early Voting at the site.
- 

### **For Electioneers – A Request from the Board of Elections**

Please do not set up tents and tables in parking spaces close to the entrance. While this is not expressly prohibited by law, it is inconvenient for voters to have to park far away from the entrance because parking spaces are taken up by electioneers.

Curbside areas have a buffer zone that extends 6' out around the parking spaces. There is to be no electioneering within that section.

Red lines denote the buffer zone, yellow parking spots denote curbside parking, green denotes the entrance to a building, and orange boxes denote where all tents should be placed.

### Early Voting Site - Aycock Recreational Complex:



The entrance to voting area is noted by the green mark. The buffer zone is 50 feet out the sidewalk toward the parking spaces as noted by the red mark. Curbside Voting and Handicapped parking is noted by the yellow markings. Please keep all campaign tents out of parking spaces and place them in grassy areas, such as the ones marked in orange markings.

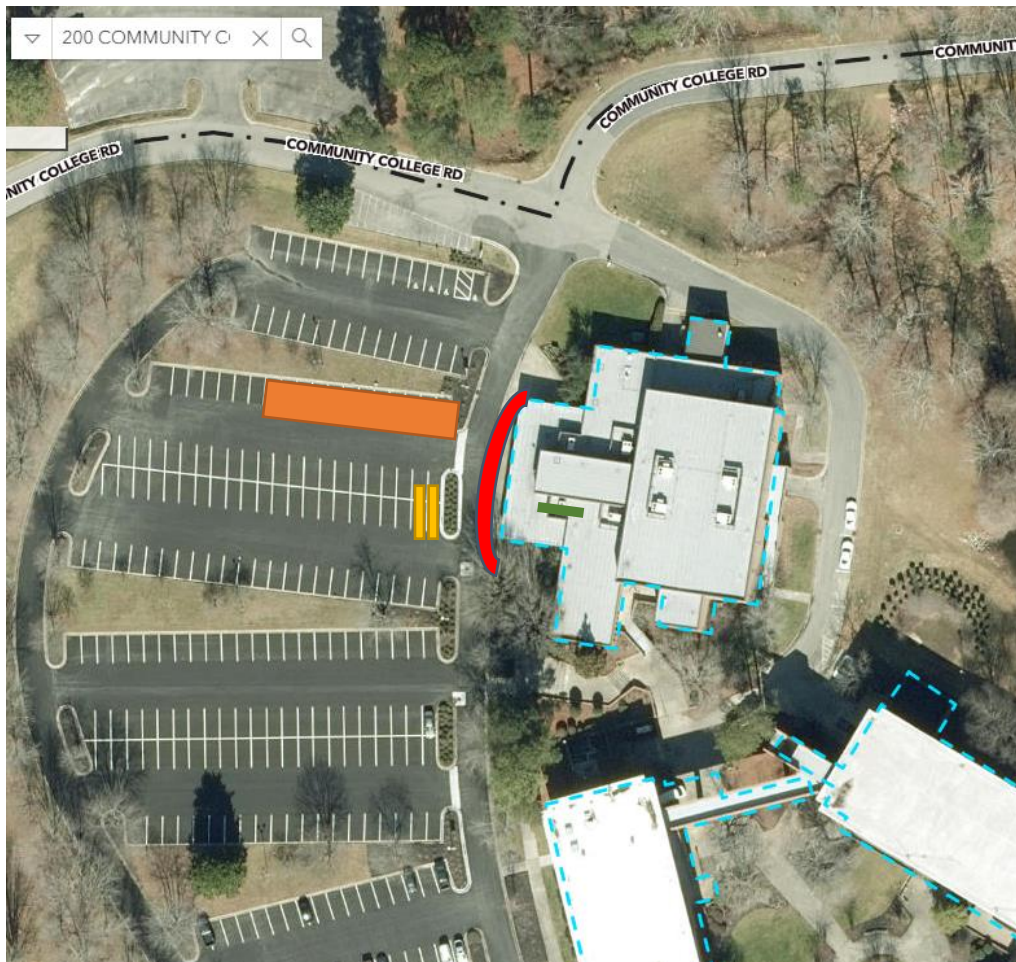
## Early Voting Site - Eaton Johnson Gym:



The entrance to voting area is noted by the green mark. The buffer zone is 50 feet out and ends at the third crack in the sidewalk toward the parking spaces as noted by the red mark. Curbside Voting and Handicapped parking is noted by the yellow markings. Please keep all campaign tents out of parking spaces and place them at the side of the parking lot, as noted by the orange markings.

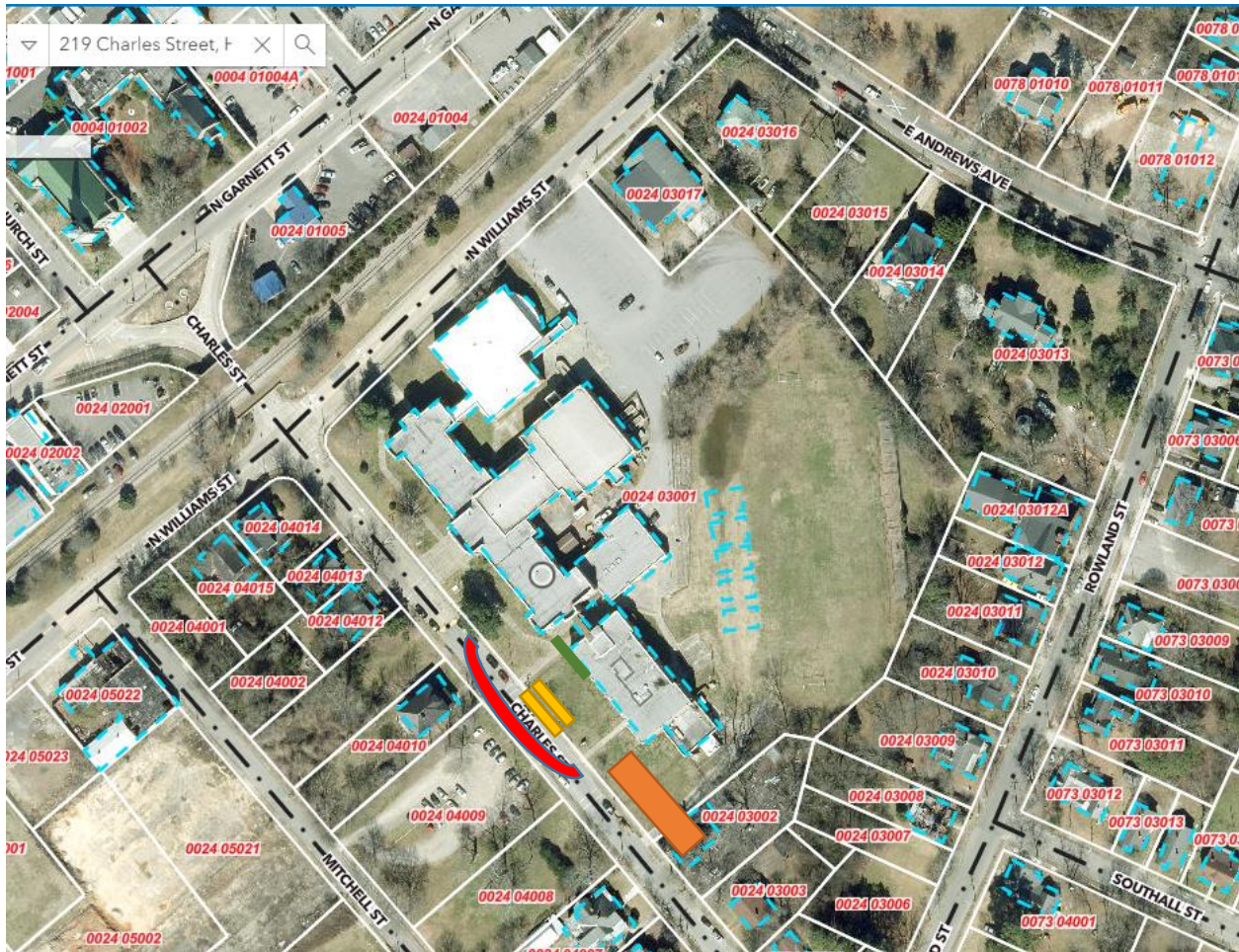


## Community College:



The entrance to voting area is noted by the green mark. The buffer zone is 38 feet out and ends midway in the parking spaces as noted by the red mark. Curbside Voting and Handicapped parking is noted by the yellow markings. Please keep all campaign tents out of parking spaces and place them at the side of the parking lot, as noted by the orange markings.

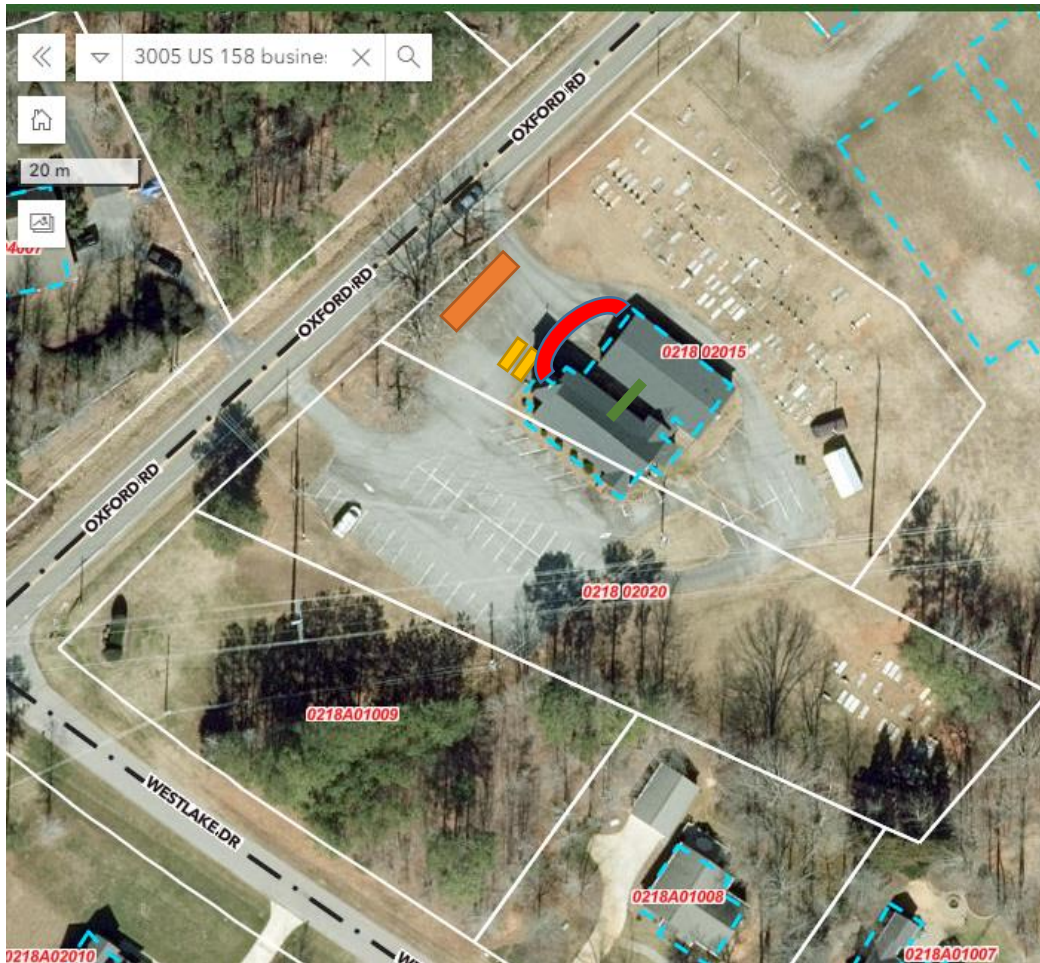
## East Henderson 1:



The entrance to voting area is noted by the green mark. The buffer zone is 50 feet out and ends at the Y in the sidewalk toward the parking spaces as noted by the red marking. Curbside Voting and Handicapped parking is noted by the yellow markings. Voter parking is street side. Please keep all campaign tents out of parking spaces and place them at the side of the parking lot, as noted by the orange markings.



Hilltop:



The entrance to voting area is noted by the green mark. The buffer zone is 50 feet out and ends where the entrance walkway meets the parking spaces as noted by the red mark. Curbside Voting and Handicapped parking is noted by the yellow markings. Please keep all campaign tents out of parking spaces and place them at the side of the parking lot, as noted by the orange markings.

Kittrell:



The entrance to voting area is noted by the green mark. The buffer zone is 50 feet out and ends within the travel lanes of the street as noted by the red mark. Curbside Voting and Handicapped parking is noted by the yellow markings. Please keep all campaign tents out of parking spaces and place them at the side of the parking lot, as noted by the orange markings.

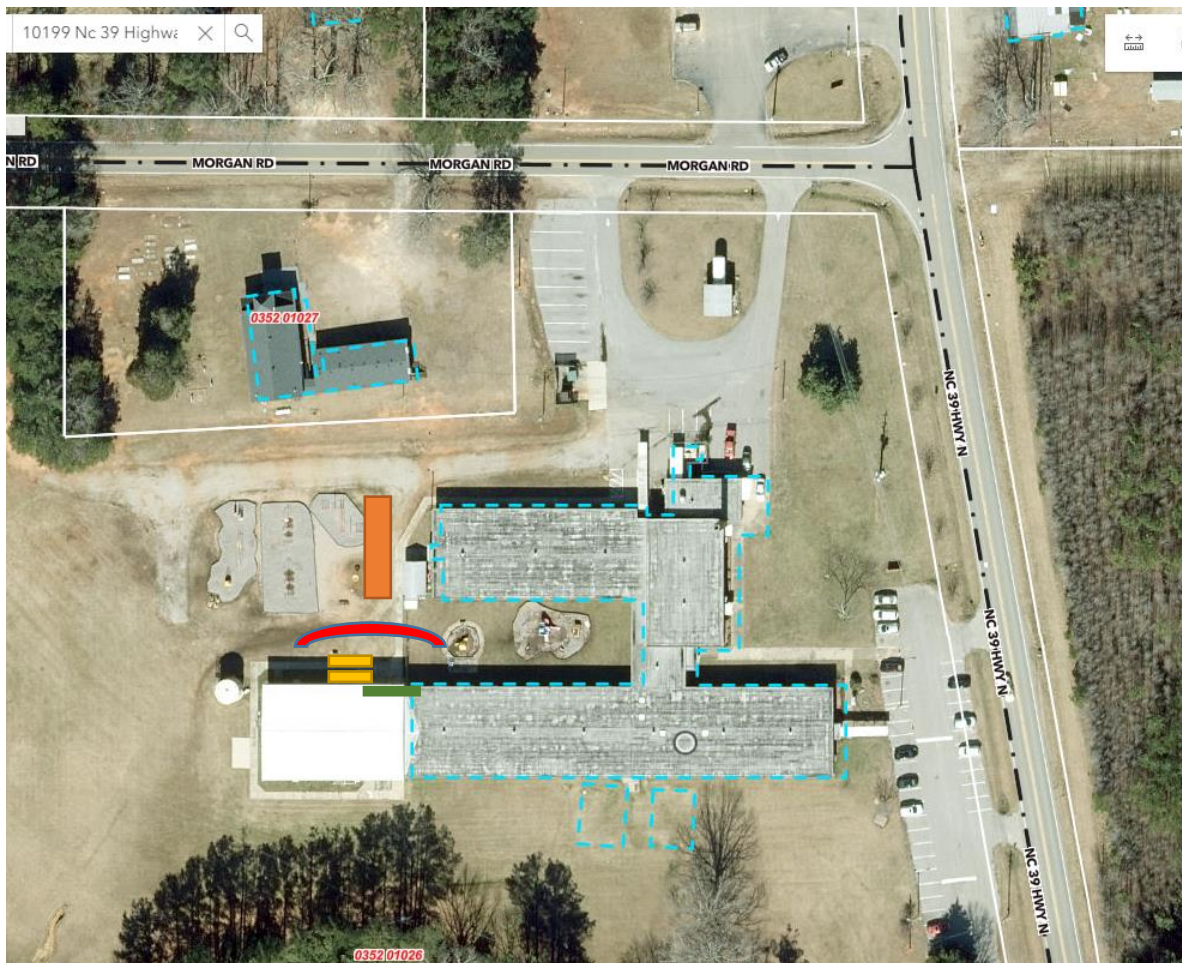


Middleburg:



The entrance to voting area is noted by the green mark. The buffer zone is 50 feet out and ends at the top of the steps where the parking spaces begin as noted by the red mark. Curbside Voting and Handicapped parking is noted by the yellow markings. Please keep all campaign tents out of parking spaces and place them at the side of the parking lot, as noted by the orange markings.

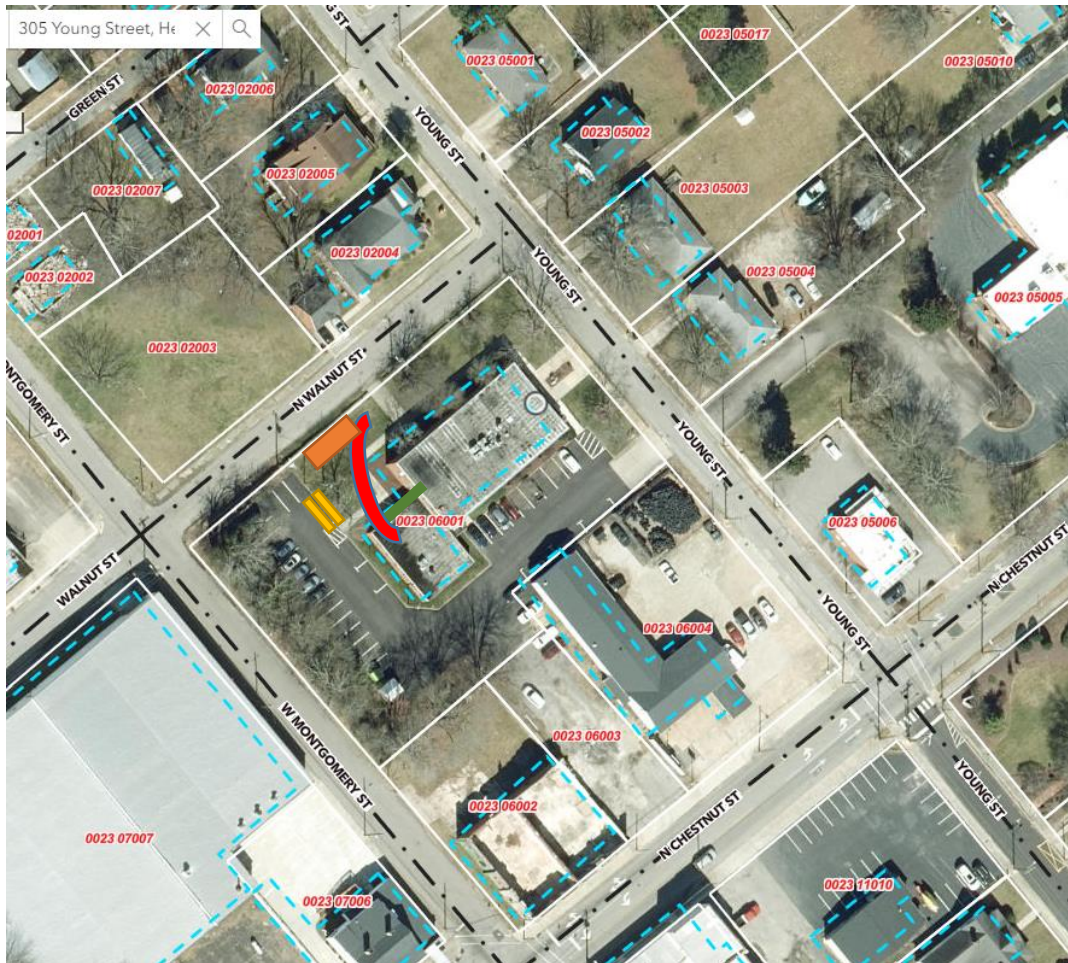
New Hope:



The entrance to voting area is noted by the green mark. The buffer zone is 25 feet out and ends midway down the sidewalk toward the parking spaces as noted by the red mark. Curbside Voting and Handicapped parking is noted by the yellow markings. Please keep all campaign tents out of parking spaces and place them at the side of the parking lot, as noted by the orange markings.



## North Henderson 1:



The entrance to voting area is noted by the green mark. The buffer zone is 50 feet out and ends midway down the sidewalk toward the parking spaces as noted by the red mark. Curbside Voting and Handicapped parking is noted by the yellow markings. Please keep all campaign tents out of parking spaces and place them at the side of the parking lot, as noted by the orange markings.

Northern Vance:



The entrance to voting area is noted by the green mark. The buffer zone is 50 feet out and ends midway down the sidewalk toward the parking spaces as noted by the red mark. Curbside Voting and Handicapped parking is noted by the yellow markings. Please keep all campaign tents out of parking spaces and place them at the side of the parking lot, as noted by the orange markings.

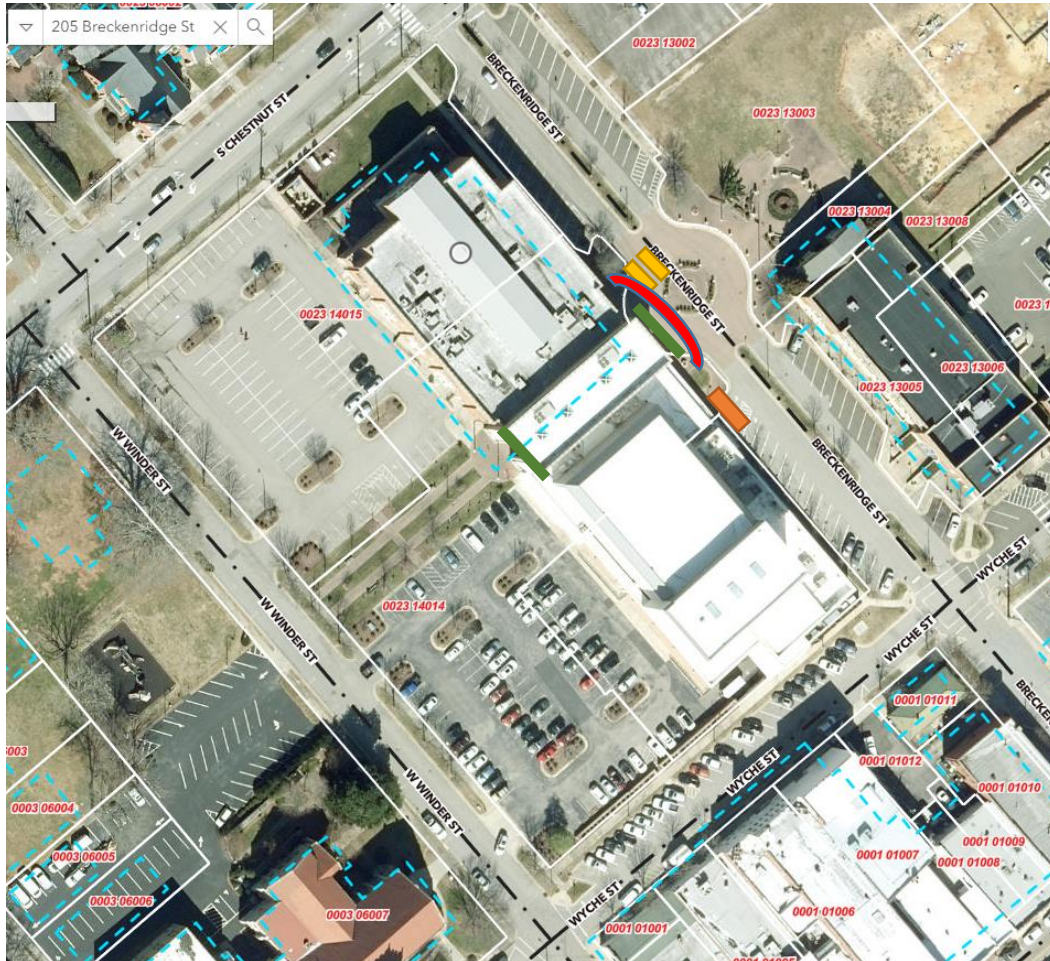


Sandy Creek:



The entrance to voting area is noted by the green mark. The buffer zone is 50 feet out the sidewalk toward the parking spaces as noted by the red mark. Curbside Voting and Handicapped parking is noted by the yellow markings. Please keep all campaign tents out of parking spaces and place them in grassy areas, such as the ones marked in orange markings.

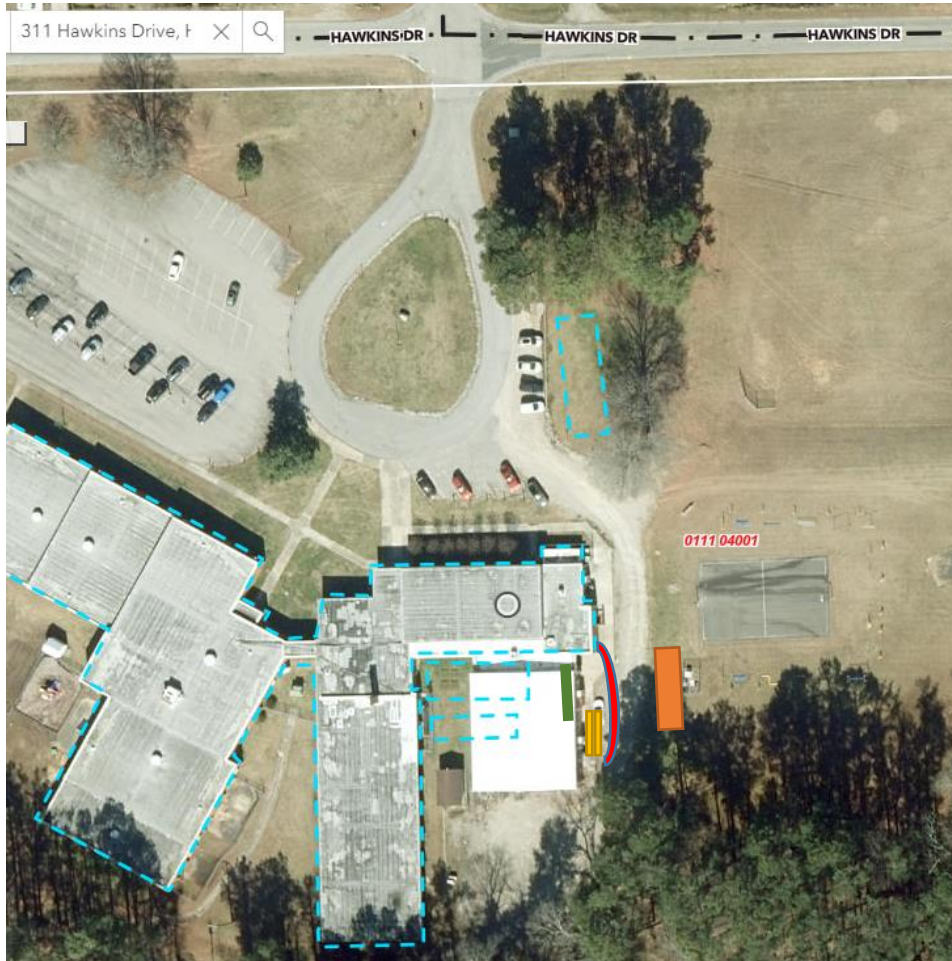
## South Henderson 1:



The entrance to voting area is noted by the green mark. The buffer zone is 50 feet out and ends at the second large flower pot toward the parking spaces as noted by the red mark. Curbside Voting and Handicapped parking is noted by the yellow markings. Please keep all campaign tents out of parking spaces and place them at the side of the parking lot, as noted by the orange markings.

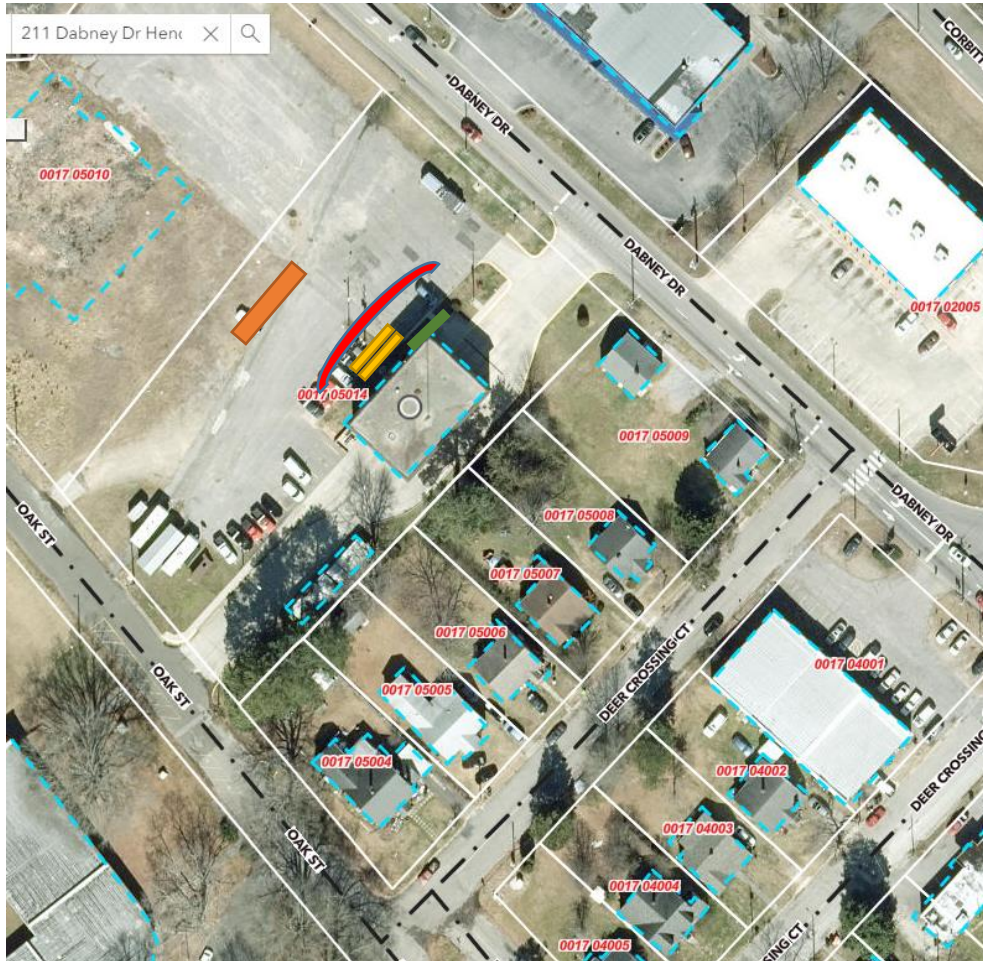


## South Henderson 2:



The entrance to voting area is noted by the green mark. The buffer zone is 38 feet out and ends across the roadway as noted by the red marking. Curbside Voting and Handicapped parking is noted by the yellow markings. Please keep all campaign tents out of parking spaces and place them at the side of the parking lot, as noted by the orange markings.

## West Henderson:



The entrance to voting area is noted by the green mark. The buffer zone is 45 feet out and ends midway in the parking spaces as noted by the red marking. Curbside Voting and Handicapped parking is noted by the yellow markings. Please keep all campaign tents out of parking spaces and place them at the side of the parking lot, as noted by the orange markings.